



Siv-ik Planning and Design Inc.
258 Richmond Street
London, ON N6B 2H7

June 24, 2025

Attention: **Dan Murphy**

Re: **767 Southdale Road East**
Proposed 4-storey Apartment Building
Sanitary Servicing Brief

This brief has been prepared to present the sanitary servicing strategy for the proposed development at 767 Southdale Road East. The 0.13ha site is located at the southwest corner of the intersection of Southdale Road East at Willow Drive. A single-detached residential dwelling currently occupies the site. The proposed development will demolish the dwelling and introduce 24 apartment units within a 4-storey building.

The existing 200mm sanitary sewer on Willow Drive will be utilized to service the proposed development. The development will increase the theoretical population for the site from 3 (1 lot x 3 people/lot) to 39 (24 units x 1.6 people/unit), which in turn will increase the peak sanitary flow to the existing sewer on Willow Drive. As such, the City has requested a capacity analysis for the entire Willow Drive sewer, down to Bradley Avenue.

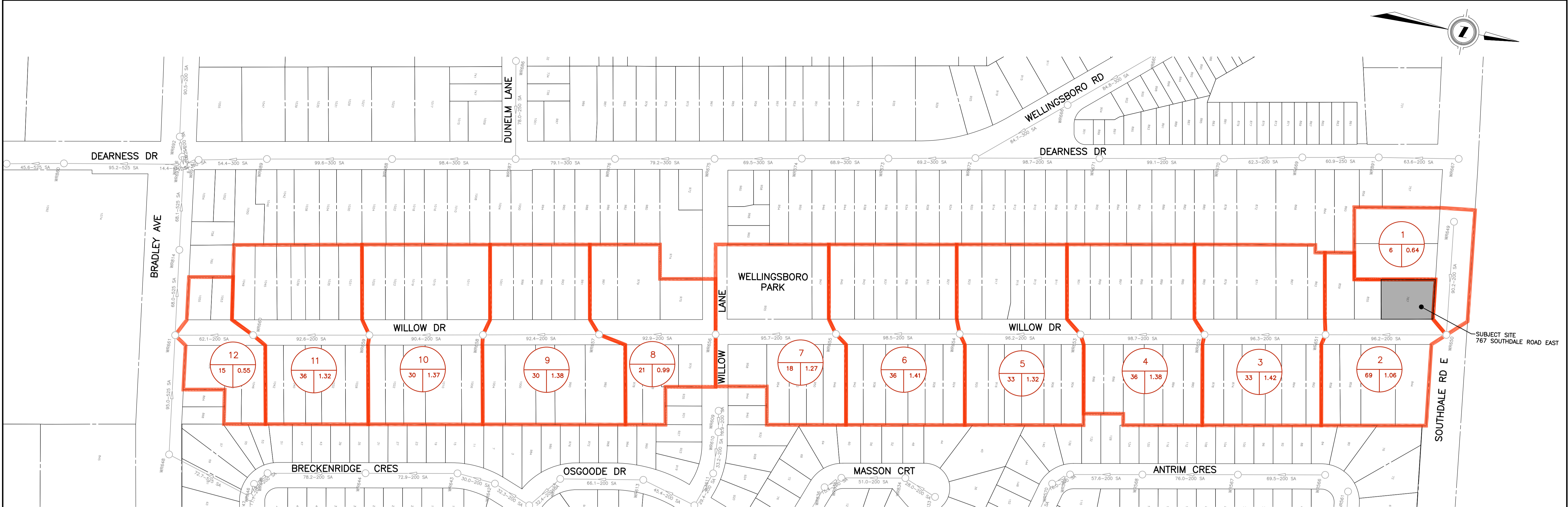
The accompanying Sanitary Drainage Area Plan and Design Sheet presents the requested capacity analysis. Peak flow for the 200mm diameter sewer on Willow Drive has been calculated using current City criteria as provided in Chapter 3 of the 2025 Design Specifications & Requirements Manual. Information for the existing sewers on Willow Drive has been obtained from available City Record Drawings. With consideration to the proposed development, existing properties, and current downstream planning applications, the theoretical peak flow is **5.77 L/s** at the downstream end. The full flow capacity of the sewer ranges from **25.43 L/s** to **46.36 L/s**, well above the peak flow of 5.77 L/s.

We trust this meets your requirements for confirmation of the capacity of the Willow Drive sanitary sewer. Please contact our office if you have any questions.

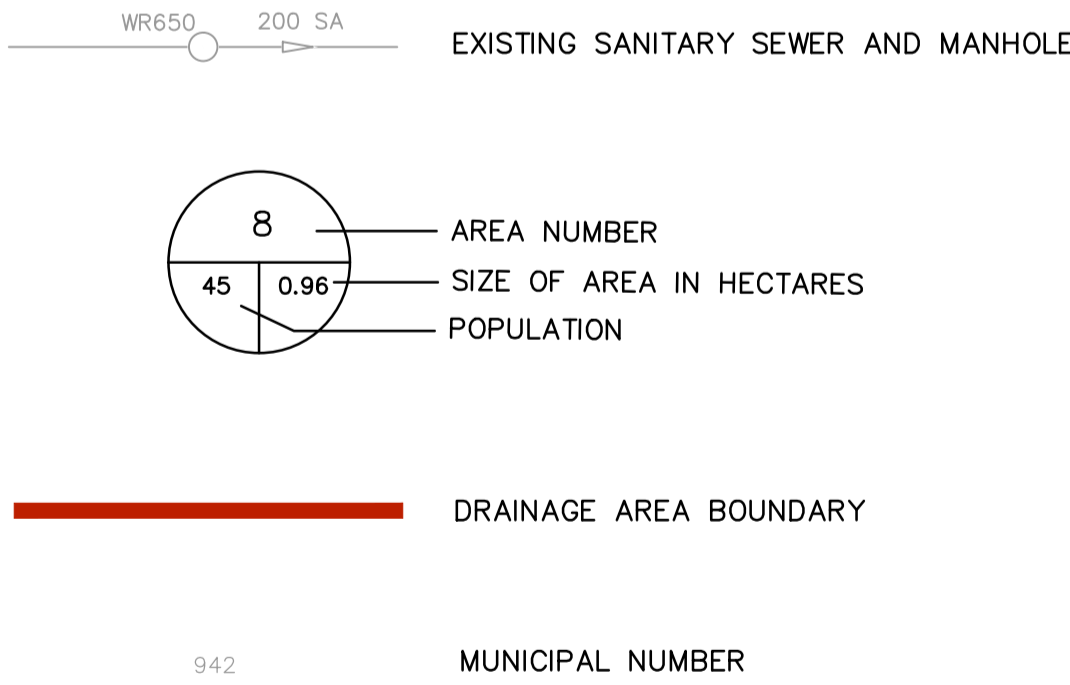
Prepared By,
Archibald, Gray & McKay Engineering Ltd.



Steve Brown, P.Eng.
Manager of Engineering Services



LEGEND



RESIDENTIAL POPULATION DENSITIES											CITY OF LONDON SANITARY SEWER DESIGN SHEET											FILE: G:\CLIENT\1000\355\Design Sheets\ SAN.xls										
(A) LOT BASIS		Single Family	3 Persons per Lot		WILLOW DRIVE																		<div>PROJECT No.: 1000-355 DESIGNED BY: DATE: May 2025</div> <div>CHECKED: AGM APPROVED: SPB</div>									
		Medium Density	2.4 Persons per Unit																													
		High Density	1.6 Persons per Unit																													
(B) AREA BASIS		External/Future	90 Persons per Ha																													
		Medium Density	180 Persons per Ha																													
		High Density	240 Persons per Ha																													
		Commercial	100 Persons per Ha																													
FLOW CRITERIA		Q = 0.0027 Litres/second/Capita (230 l/cap/day) Qinfil = 0.100 Litres/second/Hectare Uncertainty factor 1.1										TOTAL FLOW INCLUDES UNCERTAIN DEVELOPMENT FACTOR TOTAL = (SEWAGE * 1.1) + INFILT																				
PF= { 1 + [14 / (4 + P*0.5)] }																																
LOCATION				AREA		POPULATION					SEWAGE FLOW				EXISTING SEWER INFORMATION																	
AREA No.	STREET	FROM MH	TO MH	NET or GROSS	TOTAL Ha	PER Ha	PER LOT/UNIT	# of LOTS/UNITS	SUM POP	TOTAL POP	PEAKING FACTOR	INFILT L/s	SEWAGE L/s	TOTAL L/s	SIZE mm	SLOPE %	CAP L/s	N	VEL m/s	LENGTH m	FALL IN SEWER m	DROP IN MANHOLE m	INVERT U.S. m	INVERT D.S. m								
1	SOUTHDAL ROAD EAST	WR649	WR650	0.64	0.64		3	2	6	6	4.43	0.06	0.07	0.14	200	0.70%	27.37	0.013	0.87	90.2	0.628		272.357	271.729								
2	767 Southdale Road East						1.6	24	39																							
	850 Willow Drive						2.4	6	15																							
	WILLOW DRIVE	WR650	WR651	1.06	1.70		3	5	15	75	4.28	0.17	0.87	1.12	200	0.60%	25.45	0.013	0.81	96.2	0.579	0.061	271.668	271.089								
3	WILLOW DRIVE	WR651	WR652	1.42	3.12		3	11	33	108	4.23	0.31	1.23	1.67	200	0.60%	25.43	0.013	0.81	96.3	0.579	0.000	271.089	270.510								
4	WILLOW DRIVE	WR652	WR653	1.38	4.50		3	12	36	144	4.20	0.45	1.63	2.24	200	1.12%	34.64	0.013	1.10	98.7	1.101	0.015	270.495	269.394								
5	WILLOW DRIVE	WR653	WR654	1.32	5.82		3	11	33	177	4.17	0.58	1.99	2.77	200	1.07%	33.89	0.013	1.08	96.2	1.027	0.000	269.394	268.367								
6	WILLOW DRIVE	WR654	WR655	1.41	7.23		3	12	36	213	4.14	0.72	2.38	3.34	200	1.10%	34.42	0.013	1.10	98.5	1.085	0.000	268.367	267.282								
7	WILLOW DRIVE	WR655	WR656	1.27	8.50		3	6	18	231	4.12	0.85	2.57	3.68	200	0.78%	28.92	0.013	0.92	95.7	0.744	0.003	267.279	266.535								
8	WILLOW DRIVE	WR656	WR657	0.99	9.49		3	7	21	252	4.11	0.95	2.80	4.02	200	0.68%	27.10	0.013	0.86	92.9	0.634	0.000	266.535	265.901								
9	WILLOW DRIVE	WR657	WR658	1.38	10.87		3	10	30	282	4.09	1.09	3.11	4.51	200	0.70%	27.42	0.013	0.87	92.4	0.646	0.000	265.901	265.255								
10	WILLOW DRIVE	WR658	WR659	1.37	12.24		3	10	30	312	4.07	1.22	3.43	5.00	200	1.58%	41.19	0.013	1.31	90.4	1.426	0.009	265.246	263.820								
11	WILLOW DRIVE	WR659	WR660	1.32	13.56		3	12	36	348	4.05	1.36	3.81	5.54	200	2.00%	46.36	0.013	1.48	92.6	1.850	0.043	263.777	261.927								
12	WILLOW DRIVE	WR660	WR661	0.55	14.11		3	5	15	363	4.04	1.41	3.96	5.77	200	1.47%	39.75	0.013	1.27	62.1	0.912	0.079	261.848	260.936								

Note: Existing Sewer Information obtained from City Records

EXISTING SERVICES

DRAWING #, SOURCE

DATE

AS CONSTRUCTED SERVICES

COMPLETION

DETAILS

No.

REVISIONS

DATE

CONSULTANT

DESIGN

DRAWN

CHECKED

APPROVED

DATE

1000-355 Pipes

CONSULTANT OR DIVISION

AGM

PLAN • SURVEY • ENGINEER

ARCHIBALD, GRAY & McKAY
ENGINEERING LTD.
3514 WHITE OAK ROAD, LONDON, ON, N5E 2Z9
PHONE 519-685-5300 FAX 519-685-5303
EMAIL info@agm.on.ca WEB www.agm.on.ca

ENGINEERING

PROFESSIONAL ENGINEER

S. P. 8409N

90553/02

May 7/25

PROVINCE OF ONTARIO

CORPORATION OF THE CITY OF LONDON

London

CANADA

SCALE

SCALE - 1 : 1500

15 0 30m

TITLE

767 SOUTHDAL ROAD EAST
WILLOW DRIVE SANITARY CAPACITY ANALYSIS

SANITARY DRAINAGE AREA PLAN

AND DESIGN SHEET

PROJECT No.

1000-355

SHEET No.

01

PLAN FILE No.